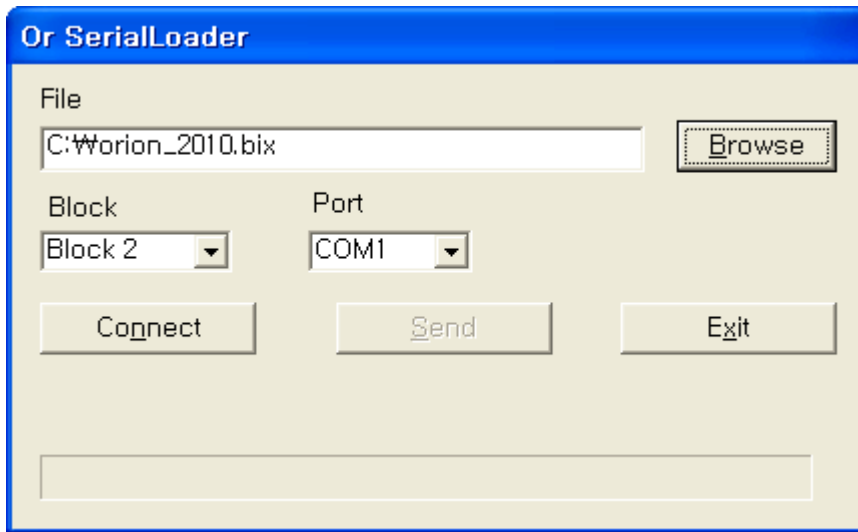
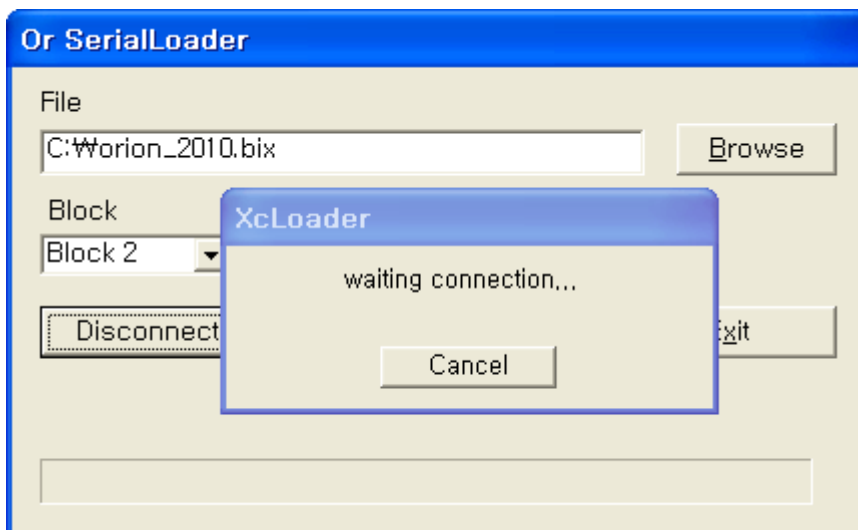


1. select orion_2xxx.bix file and block2 before press Connect button.



2. Press connect button

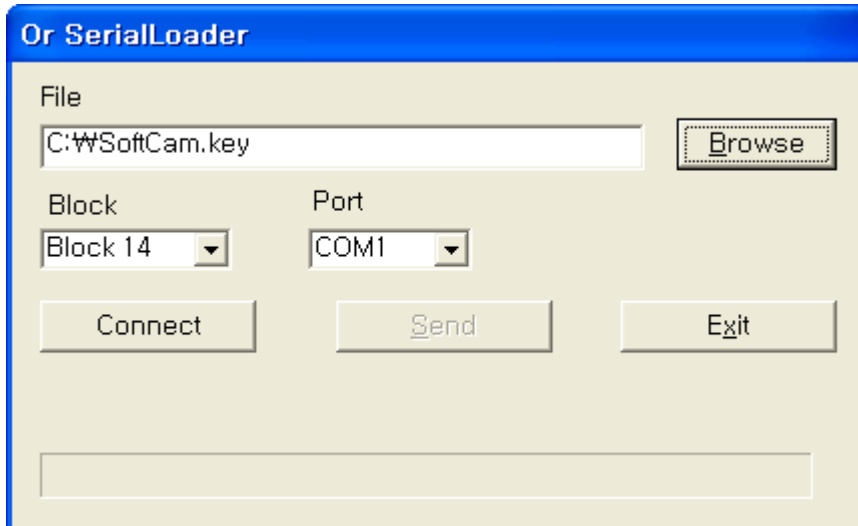


3. Pls select serial update item from CI menu of STB.

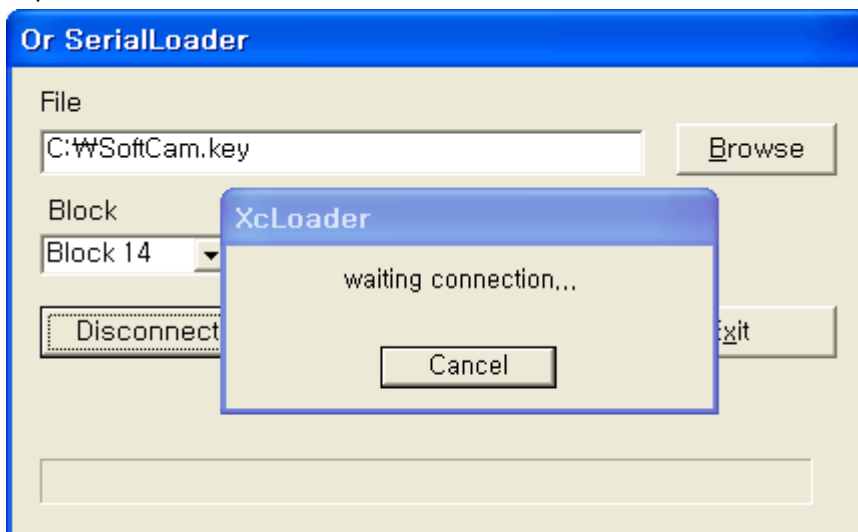
4. press "OK" key to activate loader item

5. Now starting Download.

1. select softkey.key file and **block14** before press connect button .



2. press connect button



3. select serial update item from CI menu of STB.

4. press "OK" key to activate loader item

5. Now starting Download